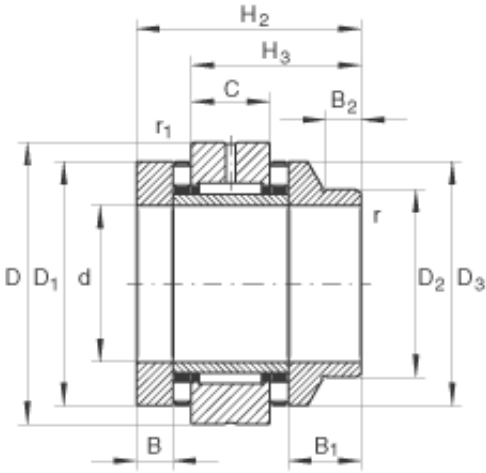




# MNT BEARING LTD

## 20 mm x 52 mm x 10 mm INA ZARN2052-L-TV Complex bearing

Bearing No. ZARN2052-L-TV



ZARN2052-L-TV Bearing 2D drawings and 3D CAD models

Size	20x52x60 mm
Bore Diameter	20 mm
Outer Diameter	52 mm
Width	60 mm
d	20 mm
D	52 mm
H <sub>2</sub>	60 mm
B	10 mm
B <sub>1</sub>	24 mm
B <sub>2</sub>	11 mm
C	16 mm
D <sub>1</sub>	42 mm
D <sub>2</sub>	30 mm
D <sub>3</sub>	40 mm
D <sub>a max</sub>	43 mm
d <sub>a min</sub>	28 mm
H <sub>3</sub>	45 mm
r <sub>1 min</sub>	0,6 mm
r <sub>min</sub>	0,3 mm
m	0,46 kg / Weight
C <sub>a</sub>	33500 N / Dynamic load rating (axial)
C <sub>0a</sub>	76000 N / Static load rating (axial)



## MNT BEARING LTD

$C_r$	14900 N / Dynamic load rating (radial)
$C_{0r}$	22400 N / Static load rating (radial)
$n_{G\ OI}$	7000 1/min / Limiting speed for oil lubrication (valid only with adequate oil cooling)
$n_{G\ Fett}$	2000 1/min / Limiting speed for grease lubrication
$M_{RL}$	0,5 Nm / Bearing frictional torque
$c_{aL}$	1800 N/ $\mu$ m / Axial rigidity
$c_{kL}$	230 Nm/mrad / Tilting rigidity
$M_m$	0,683 kg x cm <sup>2</sup> / Mass moment of inertia for rotating inner ring
	1 $\mu$ m / Axial runout (The axial runout data for screw drive bearing arrangements are based on the rotating inner ring)
	ZMA20/38 / Designation of recommended INA locknut
Category	Ball Bearings
Inventory	0.0
Manufacturer Name	SCHAEFFLER GROUP
Minimum Buy Quantity	N/A
Weight / Kilogram	0.551
Product Group	B00234