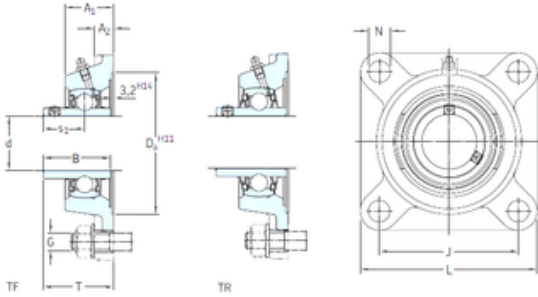




MNT BEARING LTD

SKF FY 15 FM Bearing unit

Bearing No. FY 15 FM



FY 15 FM Bearing 2D drawings and 3D CAD models

Bore Diameter	15 mm
d	15 mm
Da	55,6 mm
s1	22,1 mm
A1	26 mm
B1	28,6 mm
G	10 mm
J	54 mm
L	76 mm
N	11,5 mm
T	39,1 mm
A2	11 mm
Weight	0,47 Kg
Basic dynamic load rating (C)	9,56 kN
Basic static load rating (C0)	4,75 kN
Fatigue load limit (Pu)	0,2
Category	Bearings
Inventory	0.0
Manufacturer Name	SKF
Minimum Buy Quantity	N/A
Weight / Kilogram	0
Product Group	M06110
Housing material	Cast iron
D _a	55.6 mm
D _{b1}	50 mm
D _{b2}	53 mm



MNT BEARING LTD

A	26 mm
A ₁	11 mm
A ₃	3.2 mm
B ₁	28.6 mm
s ₁	22.6 mm
R _G	1/4-28 UNF
R ₁	19 mm
D _N	6.5 mm
SW _N	7 mm
G _N	1/4-28 SAE-LT
J ₆	66 mm
J ₇	14.5 mm
N ₄	4 mm
Basic dynamic load rating C	9.56 kN
Basic static load rating C ₀	4.75 kN
Fatigue load limit P _u	0.2 kN
Limiting speed	9500 r/min
Mass bearing unit	0.4 kg
Thread grub screw G ₂	M6x0.75
Hexagonal key size for grub screw N	3 mm
Recommended tightening torque for grub screw	4 N · m
Recommended diameter for attachment bolts, mm G	10 mm
Recommended diameter for attachment bolts, inch G	0.375 in